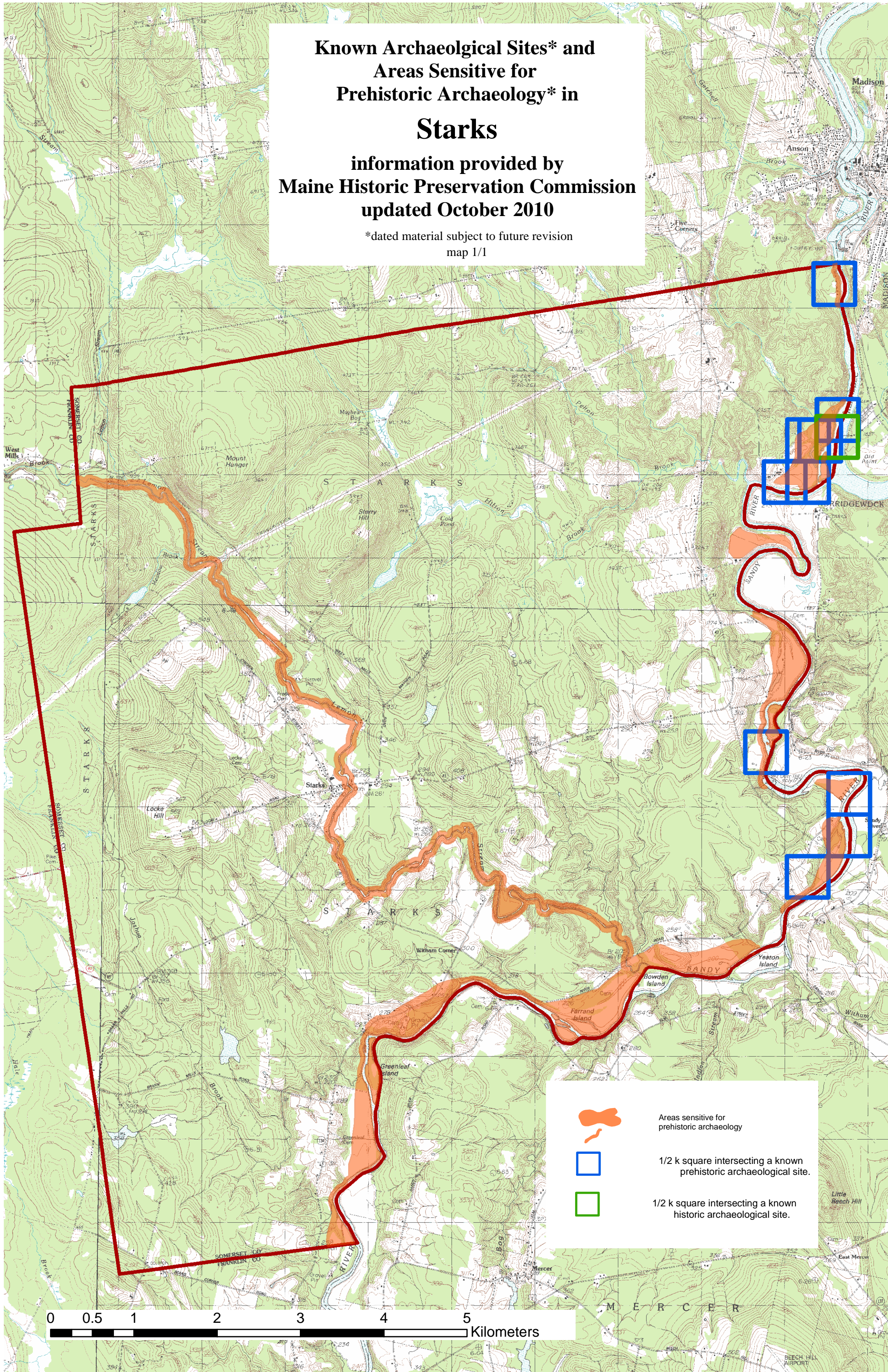


**Known Archaeological Sites* and
Areas Sensitive for
Prehistoric Archaeology* in
Starks**

**information provided by
Maine Historic Preservation Commission
updated October 2010**

*dated material subject to future revision
map 1/1



Areas sensitive for prehistoric archaeology



1/2 k square intersecting a known prehistoric archaeological site.



1/2 k square intersecting a known historic archaeological site.

